



2023

SUSTAINABILITY REPORT

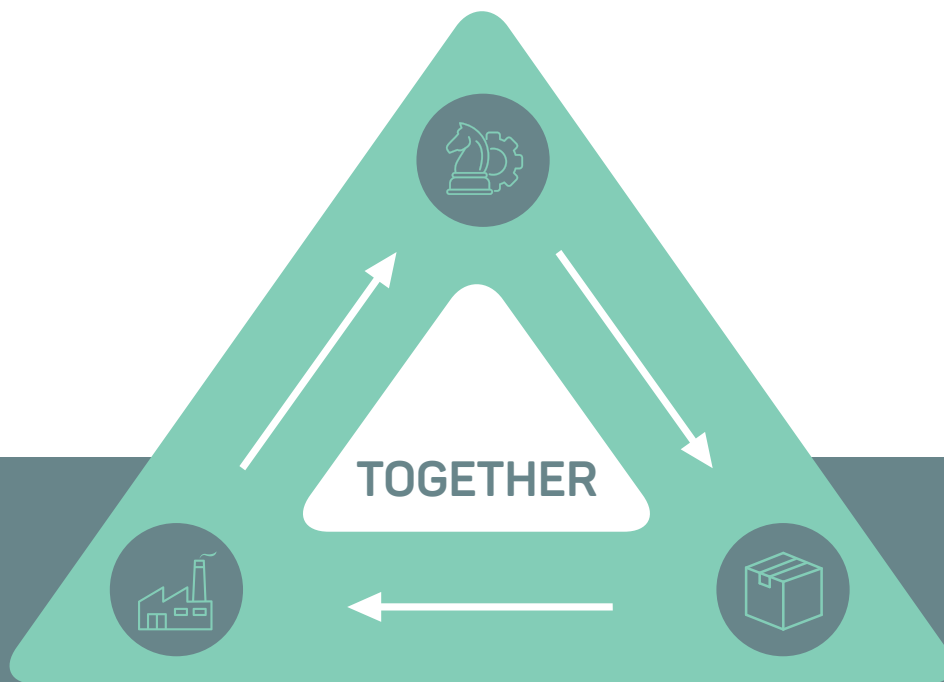


Content

CSR

Green Operation

Sustainable Product Solution



Strategy

General Manager Office
& Administrative Human Resources Department

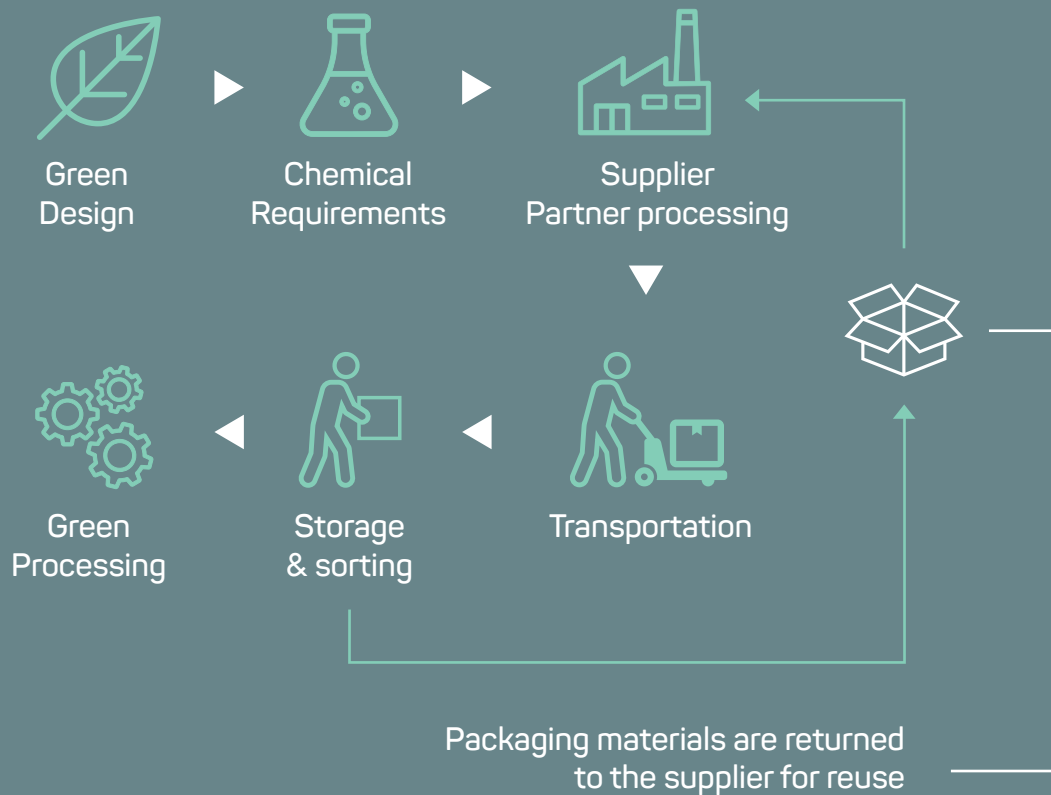
Raw material procurement & product design

Sales Department & Quality Control Technology
Department & Design Department
& Purchasing Department

Production process

Production Department & Equipment Department

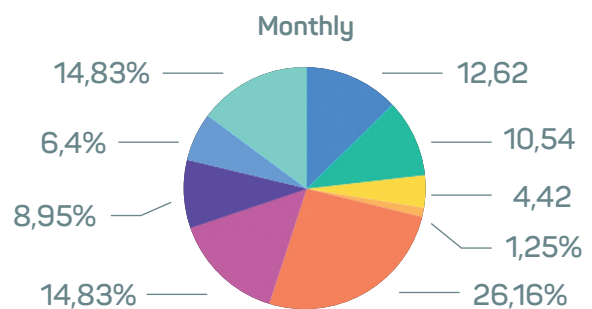
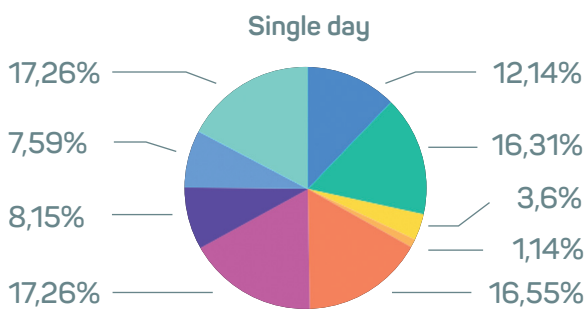
A safer world



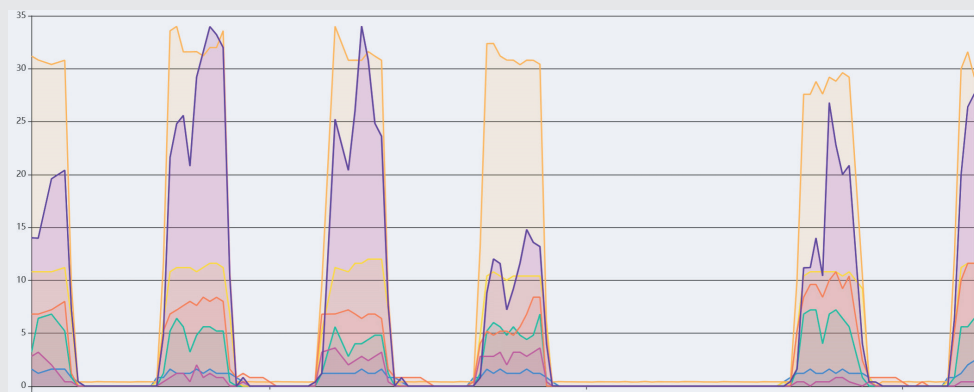
Energy data collecting system

The electric usage per each area and each hour can be collected automatically. We can use this data to make plan how to reduce carbon emission.

- LJ 1
- LJ 2
- CJ 2
- Air compressor 1
- HY Workshop
- Workshop 4
- Workshop 1
- Workshop 2
- Mask workshop



- Mask
- Plaster
- LJ light
- HVAC
- Air compressor
- HY. workshop
- Workshop 2



RA system to monitor the carbon emission in RFX+CARE China

Scope 1		Est. %	Production 2016-2022												Total
Gasoline			Jun-22	Jul-22	Aug-22	Sep-22	Oct-22	Nov-22	Dec-22	Jan-23	Feb-23	Mar-23	Apr-23	May-23	
Volume		Liters	353,77	323,77	480	256	259	257	246	219,09	150,18	407,55	310	275	3,537,36
Emissions CO2-e		Metric tons	0,991	0,907	1,344	0,717	0,725	0,72	0,689	0,613	0,421	1,141	0,868	0,77	9,906
Renewable Energy - Self Generated (solar)															
Volume		kWh	6	6	6	6	6	6	6	6	6	6	6	6	72
Emissions CO2-e		Metric tons	0	0	0	0	0	0	0	0	0	0	0	0	0
Scope 2		Est. %	Production 2016-2022												Total
Electric Power			Jun-22	Jul-22	Aug-22	Sep-22	Oct-22	Nov-22	Dec-22	Jan-23	Feb-23	Mar-23	Apr-23	May-23	
Volume		kWh	71.380	111.137	97.578	62.578	45.792	52.428	76.361	44.132	57.702	54.371	39.359	53.637	766.455
Emissions CO2-e		Metric tons	54,677	85,131	74,745	47,935	35,077	40,16	58,493	33,805	44,2	41,648	30,149	41,086	587,106
Renewable Energy Credit (EAC)															
Volume		kWh	71.380	111.137	97.578	62.578	45.792	52.428	76.361	44.132	57.702	54.371	39.359	53.637	766.455
Emissions CO2-e		Metric tons	-54,677	-85,131	-74,745	-47,935	-35,077	-40,16	-58,493	-33,805	-44,2	-41,648	-30,149	-41,086	-587,106

2023 RFX+CARE Purchase I-REC Certificates to cover the whole production



THE INTERNATIONAL REC STANDARD

This Redemption Statement has been produced for

SHAOXING RFX+CARE MANUFACTURE CO., LTD.

by

CLIMATE BRIDGE (SHANGHAI) LTD

confirming the Redemption of

800.000000

I-REC Certificates, representing 800.000000 MWh of electricity generated from renewable sources

This Statement relates to electricity consumption located at or in

No.7, Lanjiang Road, Yuecheng District, Shaoxing, Zhejiang Province China

in respect of the reporting period

2023-01-01 to 2023-12-31

The stated Redemption Purpose is

Disclosure for Scope 2 Reporting



Climate Bridge (Shanghai) Ltd.



Evident

QR Code Verification

Verify the status of this Redemption Statement by scanning the QR code on the left and entering in the Verification Key below

Verification Key

4 6 4 1 3 0 4 5

<https://evident.app/public/certificates/en/21whZ2Qc/rHphSCWNdn89FvSVLfcz1JoavUvGooqIUNdHcdZ5>

Redeemed Certificates

Production Device Details						
Device	Country of Origin	Energy Source	Technology	Supported	Commissioning Date	Carbon (CO ₂ / MWh)
Da an Haituo Windfarm Phase 2	China	Wind	Onshore	Yes	2013-07-24	0.000

Redeemed Certificates					
From Certificate ID	To Certificate ID	Number of Certificates	Offset Attributes	Period of Production	Issuer
0000-0003-4812-8264.000000	0000-0003-4812-9063.999999	800.000000	Inc	2022-07-01 - 2022-12-31	CCC

Auditor Notes

This statement is proof of the secure and unique redemption of the I-RECs stated above for the named beneficiary to be reported against consumption in the country during the reporting year stated. I-RECs are assigned to a beneficiary at redemption and cannot be further assigned to a third party. No other use of these I-RECs is valid under the I-REC Standard.

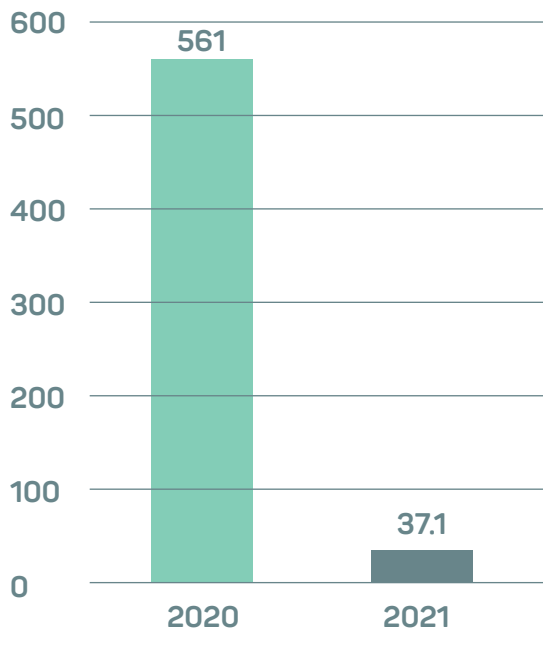
Where offset attributes are 'inc' the device registrant, who exclusively holds the environmental attribute rights, has undertaken never to release carbon offsets in association with these MWh; 'excl' means carbon offsets relating to these MWh may be traded independently at some point in the future.

For labelling scheme information please refer to the scheme's website. Labelling scheme listing may not be exhaustive.

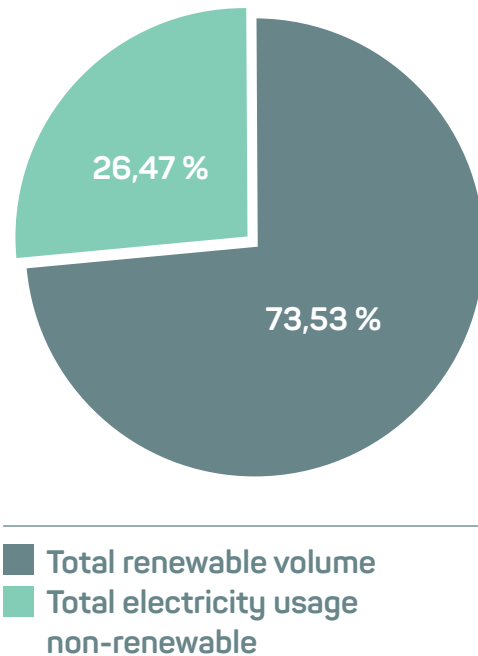
Thermal plant emit carbon as part of the combustion process. Whilst this is not zero carbon, it is generally recognised as carbon neutral where the source is recent biomass.

RA system to monitor the carbon emission in RFX+CARE China

TCO2 from scope 1 & 2 Energy. Yearly.



% Electric renewable



Examples of sustainable product development in 2022



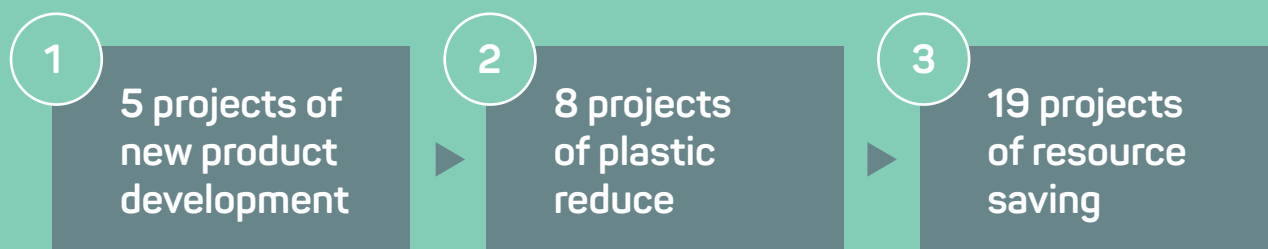
Post-consumer vest

Introducing our Post-consumer Vest, made from recycled materials to minimize environmental impact. This sustainable clothing option offers both style and sustainability

PLA+ pulp material, degradable, used to replace the original PE plastic bag.



Classification of sustainable projects in 2022



Future sustainability targets for PPE products

2023

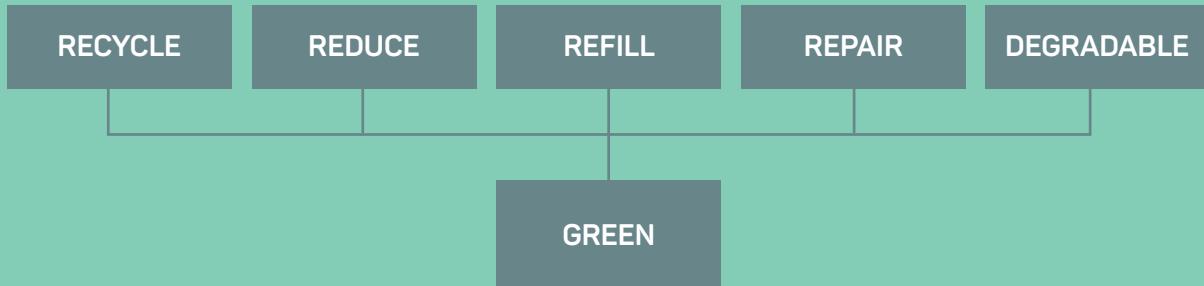
More than 15% of PPE products will be made of post-consumer-plastic material.

2026

More than 50% of RFX+CARE PPE products will be made of post-consumer-plastic material



The future direction of RFX+CARE 4R + 1D



The direction of sustainable development in the future

Recycle

Recycled vests, recycled material PP boxes, recycled materials Oxford bags, bandages, tape cores, use recycling boxes, use scraps.

Reduce

Plastic reduction, plastic removal, waste reduction.

Refill

Pre-packaged products.

Repair

Repair accessories, such as tire repair sets, repair patches (use of gluing wires)

Degradable

Degradable materials, such as paper packaging, PLA materials, use of natural degradable materials (such as cotton, viscose, wood pulp, etc.)

RFX+CARE China CO2 Trajectory

HEAT/SCOPE 1	2020	2021	2022	2023	2024	2025	2026	2027
Electric vehicles replacing petrol vehicles	0%	0%	0%	0%	33%	33%	100%	100%

HEAT/SCOPE 1 Action	2024	33% - 1 x electric vehicle - 3 metric tons						
	2025	33% - 1 x electric vehicle - 3 metric tons						
	2026	100% - 1 x electric vehicle - 12 metric tons						
	2027	100% - 3 x electric vehicle - 12 metric tons						

ELECTRICITY/SCOPE 1	2020	2021	2022	2023	2024	2025	2026	2027
% Renewable Electricity (Solar on site)	0%	0%	0%	10%	30%	40%	40%	40%

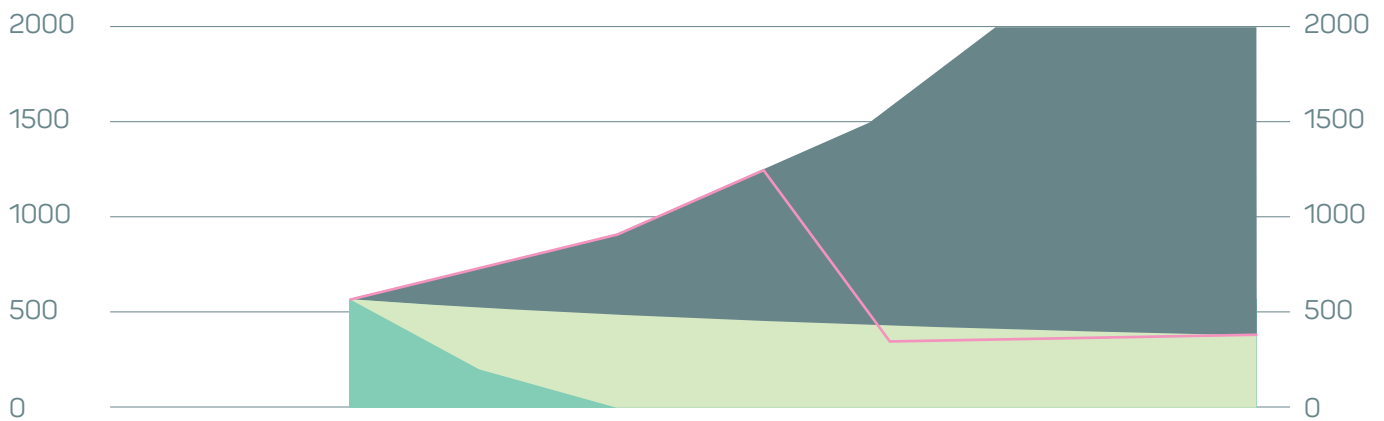
Action	2021	Renewable Electricity (Solar on site) 6kwh						
	2022	Renewable Electricity (Solar on site) 6kWh						
	2023	Renewable Electricity (Solar on site) 6kWh						
	2024	Renewable Electricity (Solar on site) 1200 MWh						
	2025	Renewable Electricity (Solar on site) 1100 MWh						
	2026	Renewable Electricity (Solar on site) 1000 MWh						
	2027	Renewable Electricity (Solar on site) 900 MWh						

ELECTRICITY/SCOPE 2	2020	2021	2022	2023	2024	2025	2026	2027
Renewable Electricity (EAC / Certificates)	0%	100%	100%	90%	70%	60%	60%	60%

Action	2021	RFX+CARE (shaoxing) buy I-REC 100% 600Mwh						
	2022	RFX+CARE (shaoxing) buy I-REC 100% 900 MWh						
	2023	RFX+CARE (shaoxing) buy I-REC 90% 900 MWh						
	2024	RFX+CARE (shaoxing) buy I-REC 70% 2000 MWh						
	2025	RFX+CARE (shaoxing) buy I-REC 60% 2000 MWh						
	2026	RFX+CARE (shaoxing) buy I-REC 60% 2000 MWh						
	2027	RFX +CARE (shaoxing) buy I-REC 60% 2000 MWh						

ELECTRICITY/SCOPE 2	2020	2021	2022	2023	2024	2025	2026
Other solutions	Green packaging	Green packaging					To be Continued

Carbon reduction roadmap of RFX+CARE China

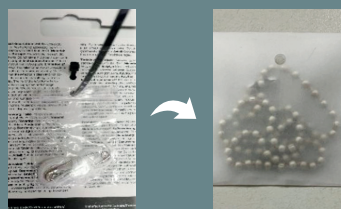


	2020	2021	2022	2023	2024	2025	2026	2027
Real carbon emission	573	760	910	1210	1510	2010	2010	2010
1.5° target	573	527	501	476	452	429	408	388
Target carbon roadmap	573	200	10	10	7	7	0	0
Carbon peak	573	760	910	1210	400	400	400	400

Plastic reduction examples of 2022



Plastic bags are removed from Falck plasters



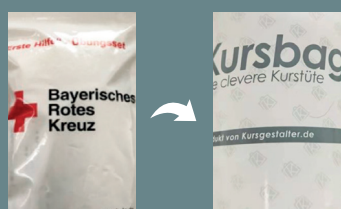
Pictura plasticbags are replaced with paperbags



Decathlon plastic bags replaced with paper boxes



Plastic wrapping removed on Decathlon first aid kits



Plastic to paper packaging on Red Cross training kit

RFX  **CARE**®